



WIFI TOUCH SWITCH USER GUIDE

Parameter:

Rated Voltage: 90V-250V AC
Max. Current: 10A
Wireless Standard: Wi-Fi 2.4Ghz
Material: PC with Glass frame

Model No.	Base	Body Color	Description
<input checked="" type="checkbox"/> VT-5003	EU	WH/BL	1GANG Switch
<input type="checkbox"/> VT-5004	EU	WH/BL	2GANG Switch
<input type="checkbox"/> VT-5005	EU	WH/BL	3GANG Switch
<input type="checkbox"/> VT-5003-BS	UK	White	1GANG Switch
<input type="checkbox"/> VT-5004-BS	UK	White	2GANG Switch
<input type="checkbox"/> VT-5005-BS	UK	White	3GANG Switch

1. Install V-TAC Smart Home App into smart phone or tablet device. Or scan the QR code, download and install into smart phone or tablet device.



Alexa/Google Home
Tutorial



FAQ



Google Paly



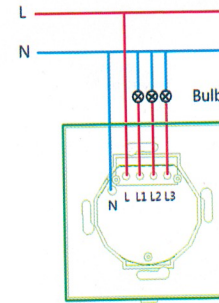
IOS



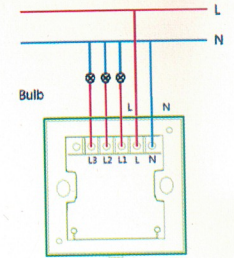
Multi language
Manual

2. Power up
ON/OFF operating principle
The connected appliances work/stop through live wire power on/off

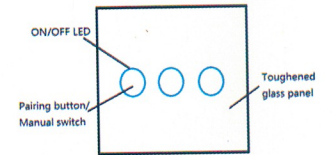
Lights wiring instruction (Eg:EU 3CH)



Lights wiring instruction (Eg:UK 3CH)



3. Cut off the power. Use screw driver to open the front cover. Connect the wires correctly. Install and power it up.



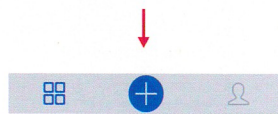
4. Set up

Press and hold one touch button for about 7 seconds until the WIFI LED repaid flashes.

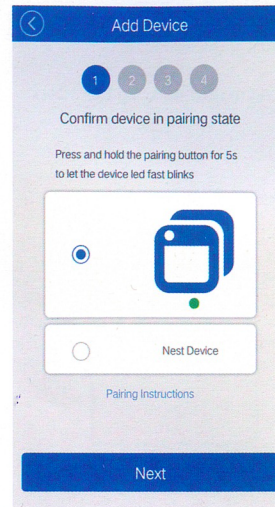
All Devices ▾

No devices currently, tap on below button to add

Tap "+" on Smart Home APP



Select the first part



Input your WiFi SSID and password.



Add Device

1 2 3 4

Name this device



Such as your light

Named your device to complete.

COMPLETE

When the blue light keeps on, the device is online. Start to control now!